

# **TXdocs Classic Install**

## **USER MANUAL**

**Schoolcraft Legal Systems**  
**TXdocs**

<b>1.</b>	<b>Installing Classic</b>	<b>3</b>
1.1	Software Install .....	4
1.2	Create the TXdocs share - Multi PC .....	5
1.3	TXdocs Client Install - Multi PC .....	8
1.4	TXdocs Folder Security Permissions - Multi PC .....	9
	<b>Index</b>	<b>0</b>

# Installing Classic

## 1 Installing Classic

**\*\*Only Applies to TXdocs Classic\*\***

**\*\*Anywhere does not need to be installed\*\***

*This manual will walk you through installing TXdocs on one or more PCs in your firm. Each section will notify you whether it applies to a one PC setup or multiple PC setup.*

**Note: Users must work within the same firm to share a TXdocs account.**

### 1.1 Software Install

---

## \_\_\_\_Software Installation\_\_\_\_

**(This step will need to be completed for a single and multiple PC setup.)**

Visit [www.TXdocs.com](http://www.TXdocs.com) , click on the **Support** link and then click on **Download** and you will see the following install files

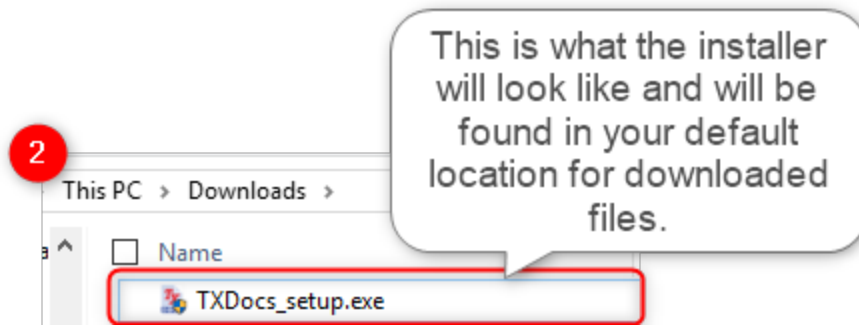
Be sure to download the version that matches the version you subscribed to. If you install the **1** wrong version it will not run under your license.

---

**1** **TXdocs** - document assembly only. This includes the regular subscription for all practice areas and the subscription for one practice area only. (unlimited as well a per-case subscriptions) [Click here to download](#)

**2** **TXdocsPlus** - document assembly and practice management only. This includes the regular subscription for all practice areas and the subscription for one practice area only. (unlimited as well a per-case subscriptions) [Click here to download](#)

**3** **TXPractice** - Practice Management only. [Click here to download](#)

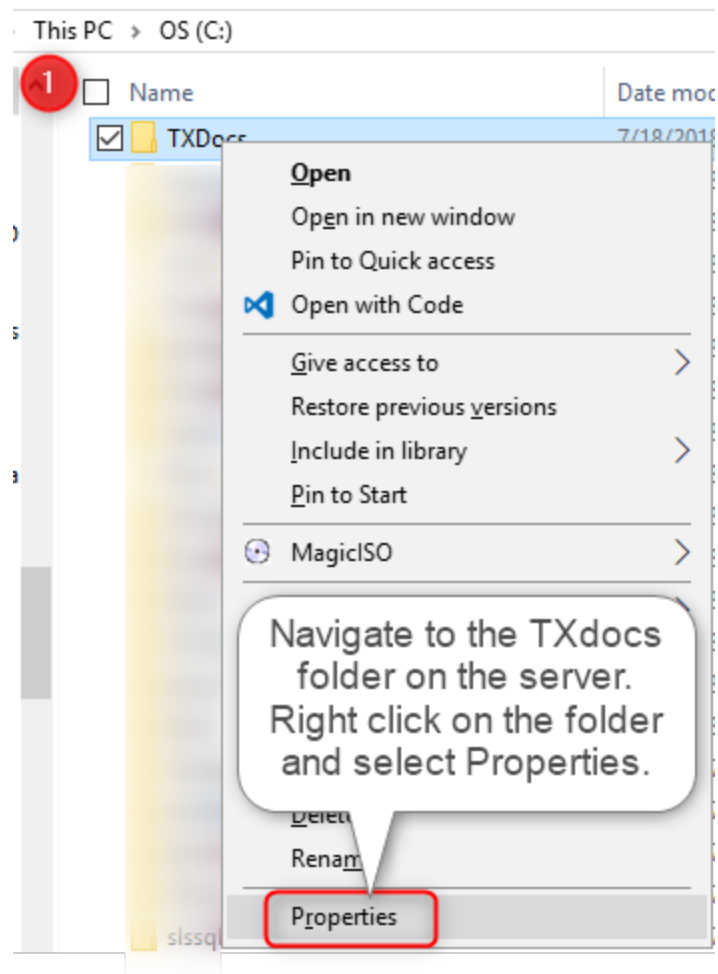


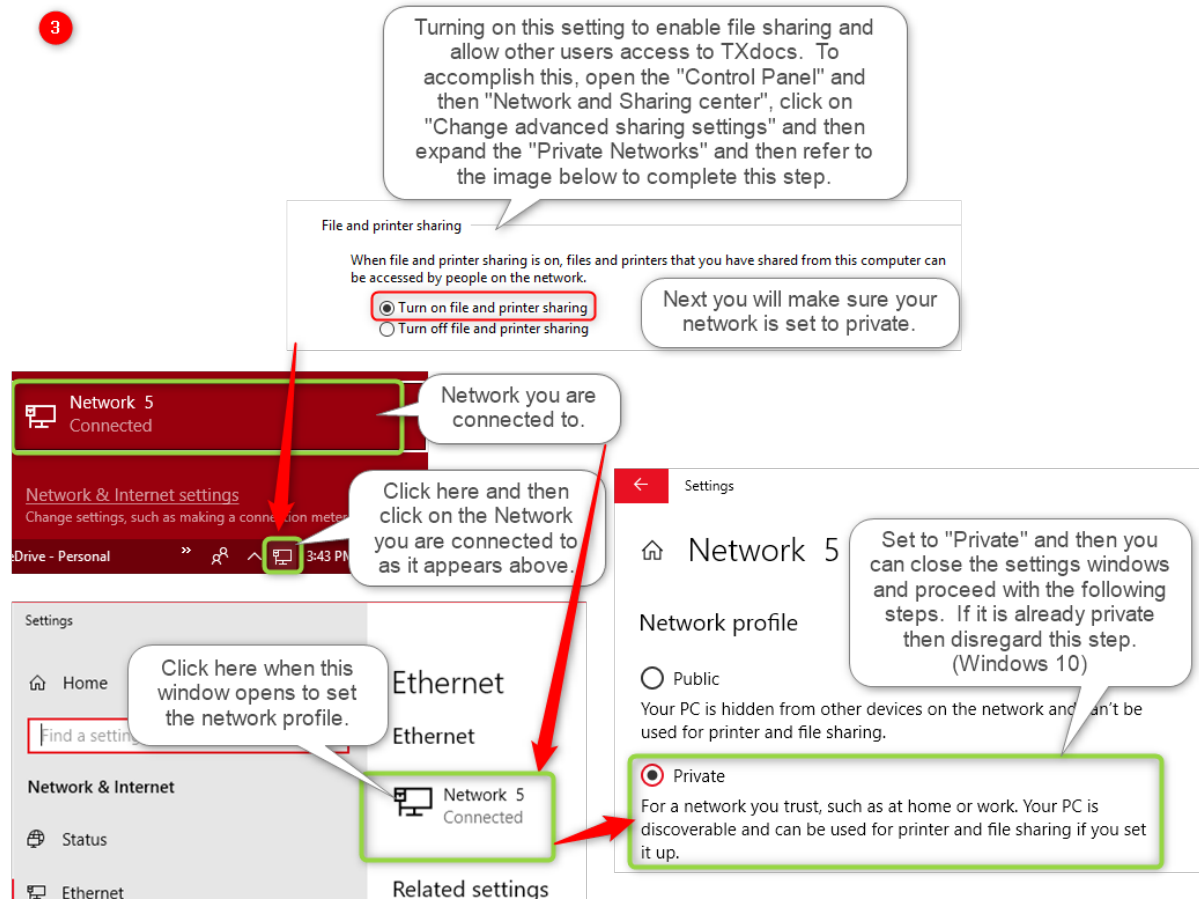
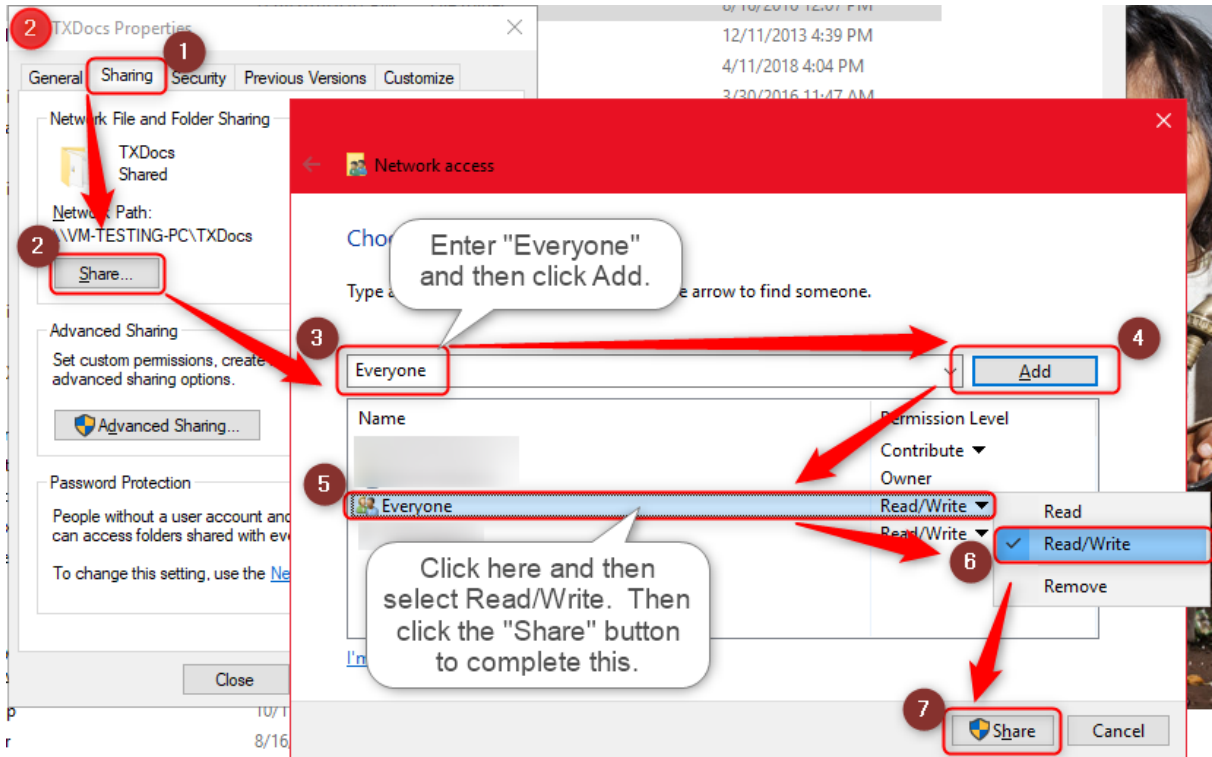
**3** Run the installer after downloading. If you experience any issues during the install, please contact our Technical Support staff and we will help you resolve the issue.

## 1.2 Create the TXdocs share - Multi PC

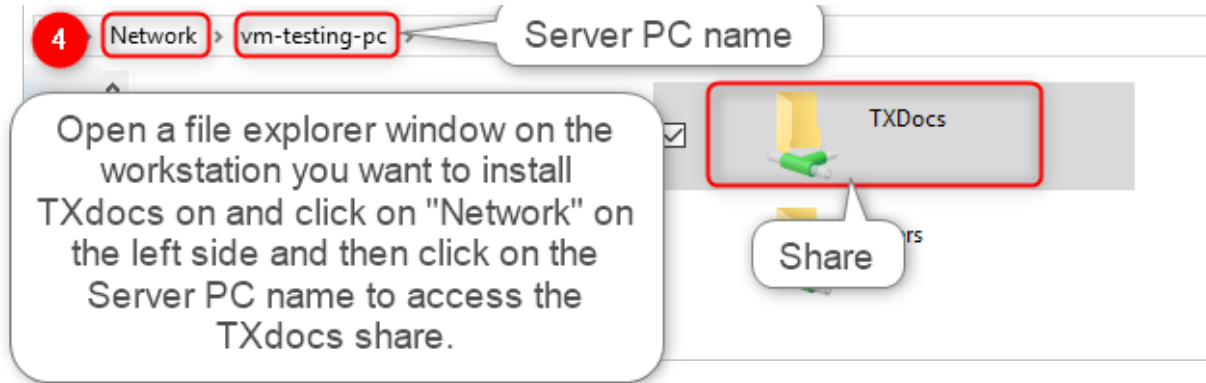
---

**\*\*Create the TXdocs share (Server)\*\***  
**(This step will only need to be completed for a multiple PC setup.)**



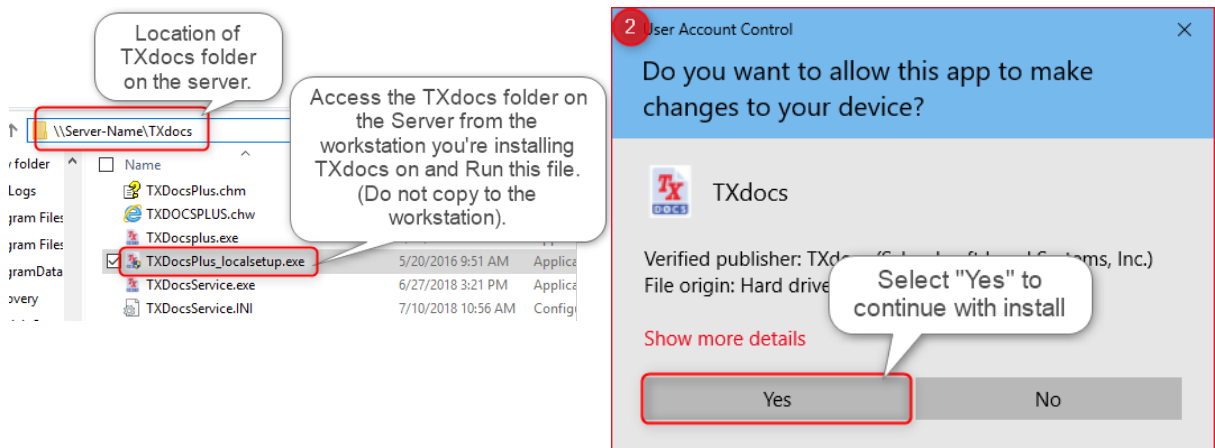


Confirm the folder is shared after completing the previous steps by following the steps below on a **workstation**.



## 1.3 TXdocs Client Install - Multi PC

**\*\*TXdocs Client Install (Workstation)\*\***  
**(This step will only need to be completed for a multiple PC setup.)**





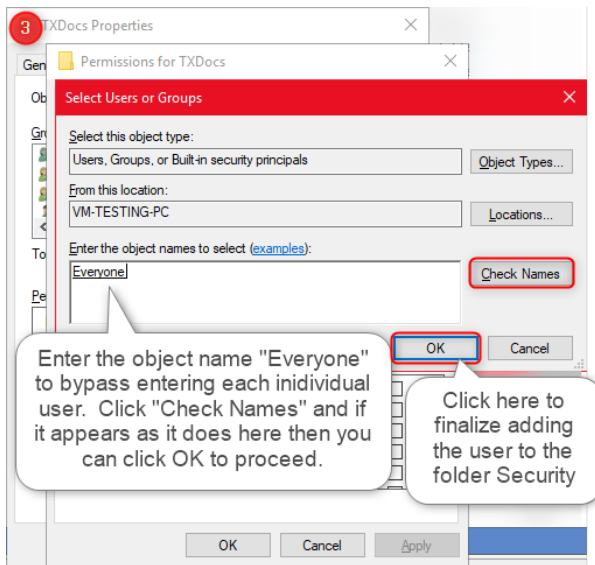
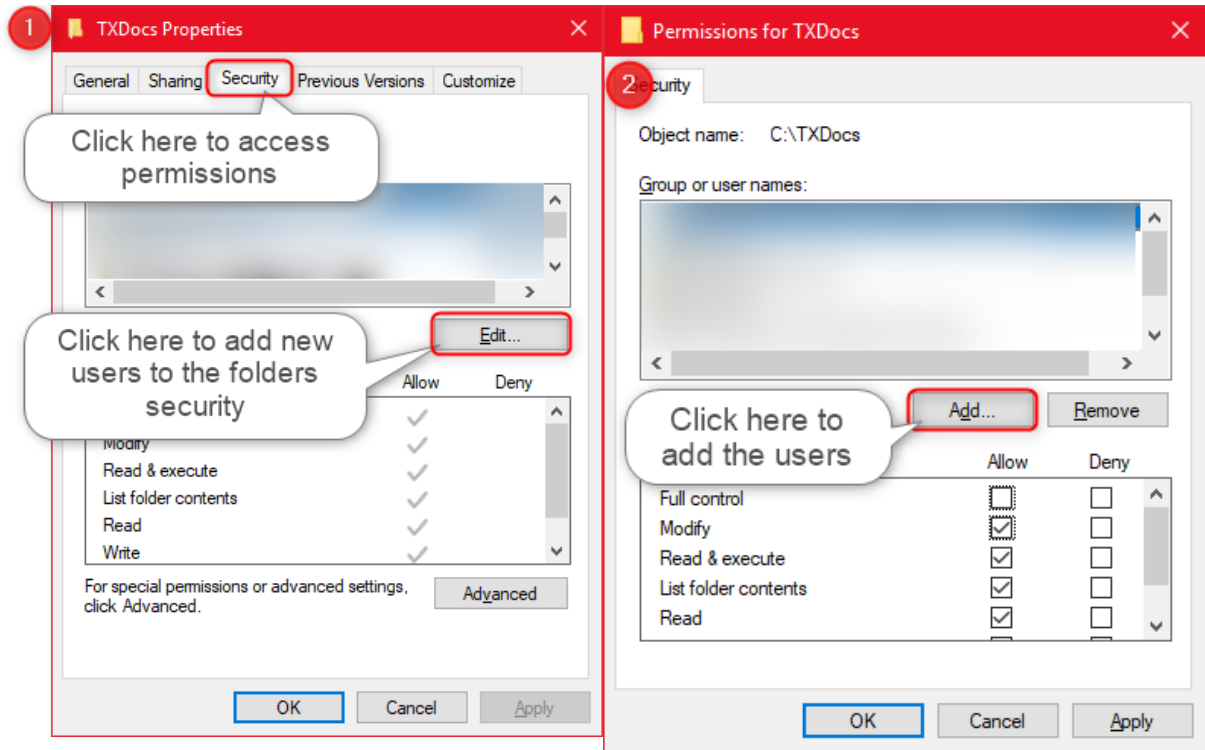


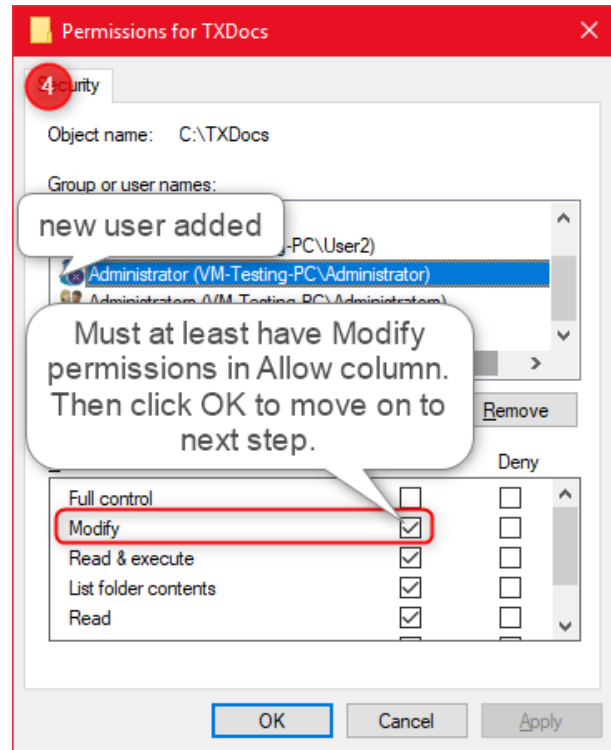
## 1.4 TXdocs Folder Security Permissions - Multi PC

**\*\*TXdocs folder Security permissions (Server)\*\***

**(This step will only need to be completed for a multiple PC setup.)**

This must be completed on the Server PC.





**\*DISCLAIMER** (Completing steps 3 & 4 above will give all users on your network the ability to modify files in this folder)